

The Problem



Flies create a huge nuisance for cattle and horses, as well as their human caretakers. Horn flies alone can cause 15 to 20 pounds per head in lost weight gain in a single season. Face flies are known vectors in the spread of diseases such as pinkeye. Biting horn and stable flies spread blood borne diseases such as anaplasmosis. Nuisance lawsuits due to flies are also on the rise. For all of these reasons, fly control is critical.

The Solution

STOCKADE® offers supplements containing either Rabon® Oral Larvicide or Altosid® Insect Growth Regulator. Either additive provides safe, effective control of fecal flies by interrupting the fly life cycle. Rabon® kills fly larvae on contact in the manure pat. Altosid®

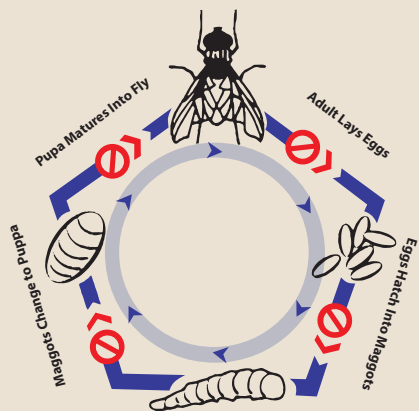
mimics the juvenile hormone, preventing larvae from maturing into adults.

Both Rabon® and Altosid® safely pass through the digestive tract to become active in the manure. Both additives are safe for dung beetles.

Neither Rabon® nor Altosid® affect existing adult flies. For optimum control, use in conjunction with good management practices and proper sanitation.

How To Use

Start feeding the STOCKADE® fly control supplement of your choice in the spring before flies first appear and continue throughout the summer and into the fall until cold weather restricts fly activity. The proper feeding period will vary with geographical location and should be determined by the emergence date of flies from previous years. Just place the desired supplement in pastures where animals congregate at the recommended stocking rate for convenient, low-stress fly control. Feed as the only source of salt or minerals for your livestock for reliable, consistent results.



Mankato, MN 56001
Stockadebrands.com



STOCKADE

Since 1946



FLY CONTROL SUPPLEMENTS

Convenient, effective, safe fly control



03/14
STK9141

Stockadebrands.com | Ph. 800-835-0306



Fly Control Mineral with IGR

Stockade 16:8 Range C2800 IGR.01 Mineral



MEDICATED

For Further Manufacture of Feed

For the control of anaplasmosis in beef cattle under 700 lbs and control of bacterial pneumonia in beef cattle.

For the prevention of adult horn fly emergence from the manure of treated cattle. See product label for mixing directions and guaranteed analysis.

ACTIVE INGREDIENTS:

Chlortetracycline 2,800 g/ton
(S)-Methoprene 0.01%

#40243

Net Wt. 50 lb.

Eliminator IGR Tub



For prevention of horn fly emergence from the manure of treated cattle.

GUARANTEED ANALYSIS

Crude Protein (Min) 12.00%
Crude Fat (Min) 3.00%
Crude Fiber (Max) 3.00%
Calcium (Min) 2.00%
Calcium (Max) 2.50%
Phosphorus (Min) 1.00%
Salt (Min) 2.00%
Salt (Max) 2.50%
Magnesium (Min) 3.00%
Potassium (Min) 0.75%
Copper (Min) 600 ppm
Iodine (Min) 45 ppm
Selenium (Min) 10 ppm
Zinc (Min) 2,050 ppm
Vitamin A (Min) 120,000 IU/lb
Vitamin D-3 (Min) 12,000 IU/lb
Vitamin E (Min) 45 IU/lb

ACTIVE INGREDIENT:

(S)-Methoprene
. 0.005%

#40221

Net Wt. 200 lb.



Rabon® Fly Control Block



For control of horn flies, face flies, stable flies and house flies in the manure of treated cattle and horses.

GUARANTEED ANALYSIS

Crude Protein (Min) 10.00%
Crude Fat (Min) 3.00%
Crude Fiber (Max) 5.00%
Calcium (Min) 10.00%
Calcium (Max) 12.00%
Phosphorus (Min) 1.00%
Salt (Min) 18.00%
Salt (Max) 21.00%
Copper (Min) 100 ppm
Iodine (Min) 5 ppm
Manganese (Min) 400 ppm
Selenium (Min) 12 ppm
Zinc (Min) 300 ppm
Vitamin A (Min) 100,000 IU/lb
Vitamin D-3 (Min) 10,000 IU/lb
Vitamin E (Min) 10 IU/lb

ACTIVE INGREDIENT:

Tetrachlorvinphos
. 0.30%

#41971

Net Wt. 33.3 lb.



Fly Control Mineral with Rabon®



For control of horn flies, face flies, stable flies and house flies in the manure of treated cattle and horses.

GUARANTEED ANALYSIS

Calcium (Min) 18.40%
Calcium (Max) 22.00%
Phosphorus (Min) 2.00%
Salt (Min) 20.00%
Salt (Max) 24.00%
Magnesium (Min) 4.00%
Copper (Min) 200 ppm
Manganese (Min) 900 ppm
Selenium (Min) 18 ppm
Zinc (Min) 550 ppm
Vitamin A (Min) 50,000 IU/lb
Vitamin D-3 (Min) 5,000 IU/lb
Vitamin E (Min) 5 IU/lb

ACTIVE INGREDIENT:

Tetrachlorvinphos
. 0.494%

#43113

Net Wt. 50 lb.

